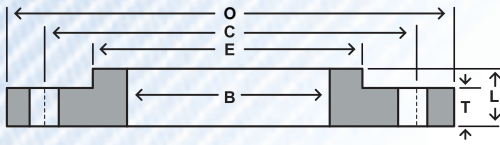


AWWA Standard Steel—Hub Flange (275psi*)

TABLE 4 CLASS E



Nom Size	Drilling								
	OD	Thickness	Overall Thickness	Dia at Base	Bore	Bolt Circle	Hole Dia	# of Holes	Weight
	O	T	L	E	B	C			
4	9.00	0.938	1.312	5.312	4.57	7.50	0.750	8	13
5	10.00	0.938	1.438	6.438	5.66	8.50	0.875	8	14
6	11.00	1.000	1.562	7.562	6.72	9.50	0.875	8	17
8	13.50	1.125	1.750	9.688	8.72	11.75	0.875	8	28
10	16.00	1.188	1.938	12.000	10.88	14.25	1.000	12	37
12	19.00	1.250	2.188	14.375	12.88	17.00	1.000	12	59
14	21.00	1.375	2.250	15.750	14.19	18.75	1.125	12	78
16	23.50	1.438	2.500	18.000	16.19	21.25	1.125	16	101
18	25.00	1.562	2.688	19.875	18.19	22.75	1.250	16	110
20	27.50	1.688	2.875	22.000	20.19	25.00	1.250	20	139
22	29.50	1.812	3.125	24.000	22.19	27.25	1.375	20	162
24	32.00	1.875	3.250	26.125	24.19	29.50	1.375	20	197
26	34.25	2.000	3.375	28.500	26.19	31.75	1.375	24	235
28	36.50	2.062	3.438	30.750	28.19	34.00	1.375	28	269
30	38.75	2.125	3.500	32.750	30.19	36.00	1.375	28	303
32	41.75	2.250	3.625	35.000	32.19	38.50	1.625	28	375
34	43.75	2.312	3.688	37.000	34.19	40.50	1.625	32	401
36	46.00	2.375	3.750	39.250	36.19	42.75	1.625	32	452
38	48.75	2.375	3.750	41.750	38.19	45.25	1.625	32	528
40	50.75	2.500	3.875	43.750	40.19	47.25	1.625	36	573
42	53.00	2.625	4.000	46.000	42.19	49.50	1.625	36	648
44	55.25	2.625	4.000	48.000	44.19	51.75	1.625	40	688
46	57.25	2.688	4.062	50.000	46.19	53.75	1.625	40	733
48	59.50	2.750	4.125	52.250	48.19	56.00	1.625	44	799
50	61.75	2.750	4.125	54.250	50.19	58.25	1.875	44	827
52	64.00	2.875	4.250	56.500	52.19	60.50	1.875	44	922
54	66.25	3.000	4.375	58.750	54.19	62.75	1.875	44	1024
60	73.00	3.125	4.500	65.250	60.19	69.25	1.875	52	1253
66	80.00	3.375	4.875	71.500	66.19	76.00	1.875	52	1623
72	86.50	3.500	5.000	78.500	72.19	82.50	1.875	60	1922
78	93.00	3.875	5.375	84.500	78.19	89.00	2.125	64	2279
84	99.75	3.875	5.375	90.500	84.19	95.50	2.125	64	2586
90	106.50	4.250	5.750	96.750	90.19	102.00	2.438	68	3061
96	113.25	4.250	5.750	102.750	96.19	108.50	2.438	68	3432

DIMENSIONS ARE IN INCHES | WEIGHTS ARE IN POUNDS

NOTES: HUB FLANGES ARE TO BE USED ON PIPE THAT HAS AN OD EQUAL TO THE NOMINAL PIPE SIZE IN THE FIRST COLUMN. *PRESSURE RATING AT ATMOSPHERIC TEMPERATURE IS 275 PSI. THESE FLANGES HAVE THE SAME OD AND DRILLING AS ANSI/ASME B16.1 CLASS 125 CAST-IRON FLANGES. IN SIZES 24" AND SMALLER, THEY ALSO MATCH ANSI/ASME B16.5 CLASS 150 STANDARD FOR STEEL FLANGES. THE THICKNESS OF A CLASS 150 FLANGE FROM WHICH THE RAISED FACE HAS BEEN REMOVED SHALL BE NO LESS THAN DIMENSION T MINUS 0.06"

