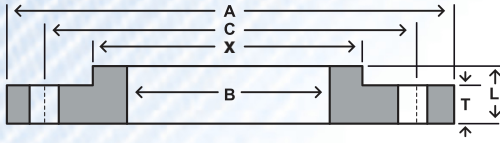


Class 125 LW (175–150psi*)

SAME AS AWWA CLASS D HUB



Nom Size						Drilling				Weight
	OD	Thickness	Dia at Base	Bore	LTH	Bolt Circle	Bolt Length	Hole Dia	# of Holes	
	A	T	X	B	L	C				
4	9.00	0.500	5.312	4.57	0.875	7.50	2.75	0.750	8	7
5	10.00	0.562	6.438	5.66	1.250	8.50	3.25	0.875	8	9
6	11.00	0.562	7.562	6.72	1.250	9.50	3.25	0.875	8	11
8	13.50	0.562	9.688	8.72	1.250	11.75	3.25	0.875	8	15
10	16.00	0.688	12.000	10.88	1.250	14.25	3.75	1.000	12	22
12	19.00	0.688	14.375	12.88	1.250	17.00	3.75	1.000	12	33
14	21.00	0.750	15.750	14.19	1.250	18.75	4.00	1.125	12	43
16	23.50	0.750	18.000	16.19	1.250	21.25	4.00	1.125	16	52
18	25.00	0.750	19.875	18.19	1.250	22.75	4.25	1.250	16	52
20	27.50	0.750	22.000	20.19	1.250	25.00	4.25	1.250	20	61
22	29.50	1.000	24.000	22.19	1.750	27.25	5.00	1.375	20	92
24	32.00	1.000	26.125	24.19	1.750	29.50	5.00	1.375	20	105
26	34.25	1.000	28.500	26.19	1.750	31.75	5.00	1.375	24	119
28	36.50	1.000	30.500	28.19	1.750	34.00	5.00	1.375	28	130
30	38.75	1.000	32.500	30.19	1.750	36.00	5.00	1.375	28	144
32	41.75	1.125	34.750	32.19	1.750	38.50	6.00	1.625	28	182
34	43.75	1.125	36.750	34.19	1.750	40.50	6.00	1.625	32	191
36	46.00	1.125	38.750	36.19	1.750	42.75	6.00	1.625	32	207
38	48.75	1.125	40.750	38.19	1.750	45.25	6.00	1.625	32	237
40	50.75	1.125	43.000	40.19	1.750	47.25	6.00	1.625	36	249
42	53.00	1.250	45.000	42.19	1.750	49.50	6.25	1.625	36	287
44	55.25	1.250	47.000	44.19	2.250	51.75	6.25	1.625	40	334
46	57.25	1.250	49.000	46.19	2.250	53.75	6.25	1.625	40	348
48	59.50	1.375	51.000	48.19	2.500	56.00	6.50	1.625	44	407
50	61.75	1.375	53.000	50.19	2.500	58.25	7.00	1.875	44	421
52	64.00	1.375	55.000	52.19	2.500	60.50	7.00	1.875	44	448
54	66.25	1.375	57.000	54.19	2.500	62.75	7.00	1.875	44	475
60	73.00	1.500	63.000	60.19	2.750	69.25	7.25	1.875	52	605
66	80.00	1.500	69.000	66.19	2.750	76.00	7.25	1.875	52	718
72	86.50	1.500	75.000	72.19	2.750	82.50	7.25	1.875	60	803
78	93.00	1.750	81.250	78.19	3.000	89.00	8.25	2.125	64	1010
84	99.75	1.750	87.500	84.19	3.000	95.50	8.25	2.125	64	1160
90	106.50	2.000	93.750	90.19	3.250	102.00	9.50	2.438	68	1430
96	113.25	2.000	100.000	96.19	3.250	108.50	9.50	2.438	68	1618

DIMENSIONS ARE IN INCHES | WEIGHTS ARE IN POUNDS

NOTES: HUB FLANGES ARE TO BE USED ON PIPE THAT HAS AN OD EQUAL TO THE NOMINAL PIPE SIZE IN THE FIRST COLUMN. *PRESSURE RATINGS ARE FROM AWWA TABLE 3 CLASS D. PRESSURE RATING AT ATMOSPHERIC TEMPERATURE: SIZES 4-12" INCLUSIVE, 175 PSI; SIZES LARGER THAN 12", 150 PSI. THESE FLANGES HAVE THE SAME DIAMETER AND DRILLING AS ANSI/ASME B16.1 CLASS 125 CAST IRON FLANGES. IN SIZES 24" AND SMALLER THEY ALSO MATCH UP TO ANSI/ASME B16.5 150-PSI STANDARD FOR STEEL FLANGES.

