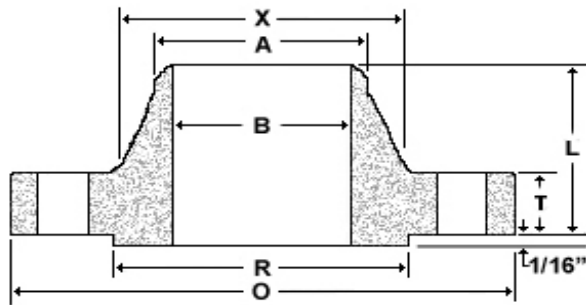
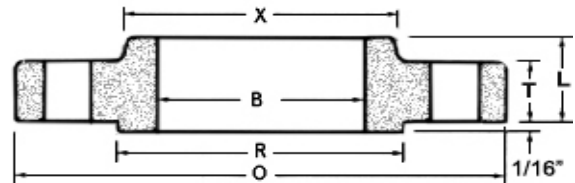


# Industry Standard Class 175



**Weld Neck**



**Slip-On**

Nom Size	Thickness				OD of RF	Dia at Base	Bore		LTH		Dia Bevel
	OD	Weld Neck	Slip-On	Blind			Weld Neck	Slip-On	Weld Neck	Slip-On	
	O	C	C				B	B	L	L	
26	31.50	1.38	1.38	1.78	29.00	27.63	To be specified by purchaser.	26.25	3.38	2.75	To be established by design requirements.
28	33.50	1.38	1.38	2.00	31.00	29.63		28.25	3.38	2.75	
30	35.75	1.38	1.38	2.13	33.25	31.88		30.25	3.63	2.75	
32	37.75	1.38	1.38	2.25	35.25	33.88		32.25	3.63	2.75	
34	40.25	1.50	1.75	2.38	37.38	35.88		34.25	3.75	3.38	
36	42.25	1.50	1.75	2.50	39.38	37.88		36.25	3.75	3.38	
38	44.25	1.75	2.00	2.63	41.38	39.88		38.25	4.13	3.75	
40	46.25	1.75	2.00	2.75	43.38	41.88		40.25	4.13	4.00	
42	49.00	2.00	2.38	2.88	45.75	44.13		42.25	4.50	4.38	
44	51.00	2.00	2.38	3.00	47.75	46.13		44.25	4.50	4.38	
46	53.00	2.00	2.38	3.13	49.75	48.13		46.25	4.50	4.63	
48	55.00	2.25	2.63	3.38	51.75	50.13		48.25	4.88	4.88	
50	57.00	2.25	2.63	3.38	53.75	52.13		50.25	4.88	4.88	
52	59.50	2.63	3.00	3.63	56.00	54.25		52.25	5.38	5.38	
54	61.50	2.63	3.00	3.63	58.00	56.25		54.25	5.38	5.38	
60	67.50	2.75	3.13	4.00	64.00	62.25		60.25	5.75	5.88	
66	73.50	3.13	4.00	4.38	70.00	68.50		66.25	6.13	6.88	
72	80.00	3.63	5.00	4.75	76.50	74.50		72.25	6.63	8.00	
84	94.00	3.00	5.00	5.50	90.13	88.00	84.25	7.00	8.50		
96	106.00	3.50	5.00	6.12	102.13	100.00	96.25	7.50	9.00		

*Dimensions are in inches. Weights are in pounds.*

continued on next page

# Industry Standard Class 175

continued

Nom Size	Drilling				Weight		
	Bolt Circle	Bolt Length <sup>a</sup>	Hole Dia <sup>b</sup>	# of Holes	Weld Neck	Slip On	Blind
26	29.88	5.50	0.88	28	120	105	405
28	31.88	5.75	0.88	28	130	115	490
30	34.13	5.75	0.88	36	150	130	590
32	36.13	6.00	0.88	36	160	140	700
34	38.38	6.75	1.00	36	195	200	840
36	40.38	6.75	1.00	36	205	210	970
38	42.38	7.25	1.00	36	245	250	1125
40	44.38	7.25	1.00	40	255	270	1300
42	46.88	8.00	1.13	40	340	365	1500
44	48.88	8.25	1.13	40	360	380	1700
46	50.88	8.25	1.13	40	375	410	1925
48	52.88	8.75	1.13	44	430	460	2225
50	54.88	8.75	1.13	44	450	480	2400
52	57.25	9.75	1.25	44	560	600	2800
54	59.25	9.75	1.25	44	580	620	3000
60	65.25	10.25	1.25	48	680	730	4000
66	71.25	11.50	1.25	56	830	1000	5175
72	77.75	12.75	1.25	64	1075	1400	6650
84	91.5	13.75	1.38	72	1550	2250	-
96	103.5	14.25	1.38	88	1950	2600	-

*Dimensions are in inches. Weights are in pounds.*

Note: Sizes are nominal inside diameters of pipe or shell used with Welding Neck flanges, and nominal OD of pipe or shell used with Slip-On flanges. Larger sizes as well as intermediate sizes can be furnished.

- (a) Bolt lengths are calculated based on bolting one slip-on to one blind. Any other bolting combination will cause variance in bolt length.
- (b) Bolt hole diameter 1/8in. larger than bolt diameter.