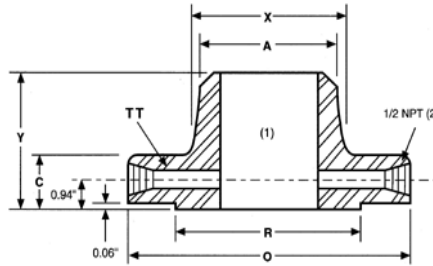


# Welding Neck Orifice Class 300



									Drilling			
	Nom Size	OD	Thickness	OD of RF	Dia at Base	Dia Bevel	LTH	Dia of Pressure Connection	Bolt Circle	Hole Dia	# of Holes	Bolt Dia
		O	C	R	X	A	Y	TT				
in	1	4.88	1.50	2.00	2.12	1.32	3.25	1/4	3.50	0.69	4	5/8
mm		124.0	38.1	50.8	53.8	33.5	82.6	6.4	88.9	17.5		15.9
in	1 1/2	6.12	1.50	2.88	2.75	1.90	3.38	1/4	4.50	0.81	4	3/4
mm		155.4	38.1	73.2	69.9	48.3	85.9	6.4	114.3	20.6		19.1
in	2	6.50	1.50	3.62	3.31	2.38	3.38	1/4	5.00	0.69	8	5/8
mm		165.1	38.1	91.9	84.1	60.5	85.9	6.4	127.0	17.5		15.9
in	2 1/2	7.50	1.50	4.12	3.94	2.88	3.50	1/4	5.88	0.81	8	3/4
mm		190.5	38.1	104.6	100.1	73.2	88.9	6.4	149.4	20.6		19.1
in	3	8.25	1.50	5.00	4.62	3.50	3.50	3/8	6.62	0.81	8	3/4
mm		209.6	38.1	127.0	117.3	88.9	88.9	9.5	168.1	20.6		19.1
in	4	10.00	1.50	6.19	5.75	4.50	3.62	1/2	7.88	0.81	8	3/4
mm		254.0	38.1	157.2	146.1	114.3	91.9	12.7	200.2	20.6		19.1
in	6	12.50	1.50	8.50	8.12	6.63	3.94	1/2	10.62	0.88	12	3/4
mm		317.5	38.1	215.9	206.2	168.4	100.1	12.7	269.7	22.4		19.1
in	8	15.00	1.62	10.62	10.25	8.63	4.38	1/2	13.00	1.00	12	7/8
mm		381.0	41.1	269.7	260.4	219.2	111.3	12.7	330.2	25.4		22.2
in	10	17.50	1.88	12.75	12.62	10.75	4.62	1/2	15.25	1.12	16	1
mm		444.5	47.8	323.9	320.5	273.1	117.3	12.7	387.4	28.4		25.4
in	12	20.50	2.00	15.00	14.75	12.75	5.12	1/2	17.75	1.25	16	1 1/8
mm		520.7	50.8	381.0	374.7	323.9	130.0	12.7	450.9	31.8		28.6
in	14	23.00	2.12	16.25	16.75	14.00	5.62	1/2	20.25	1.25	20	1 1/8
mm		584.2	53.8	412.8	425.5	355.6	142.7	12.7	514.4	31.8		28.6
in	16	25.50	2.25	18.50	19.00	16.00	5.75	1/2	22.50	1.38	20	1 1/4
mm		647.7	57.2	469.9	482.6	406.4	146.1	12.7	571.5	35.1		31.8
in	18	28.00	2.38	21.00	21.00	18.00	6.25	1/2	24.75	1.38	24	1 1/4
mm		711.2	60.5	533.4	533.4	457.2	158.8	12.7	628.7	35.1		31.8
in	20	30.50	2.50	23.00	23.12	20.00	6.38	1/2	27.00	1.38	24	1 1/4
mm		774.7	63.5	584.2	587.2	508.0	162.1	12.7	685.8	35.1		31.8
in	24	36.00	2.75	27.25	27.62	24.00	6.62	1/2	32.00	1.62	24	1 1/2
mm		914.4	69.9	692.2	701.5	609.6	168.1	12.7	812.8	41.1		38.1

Note: Weld Neck flanges NPS 3" and smaller are identical to Class 600 flanges and may be so marked.

(1) Bore diameter to be specified by purchaser.

(2) Other NPT and SW connections available upon request.